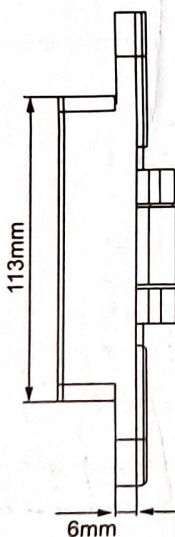
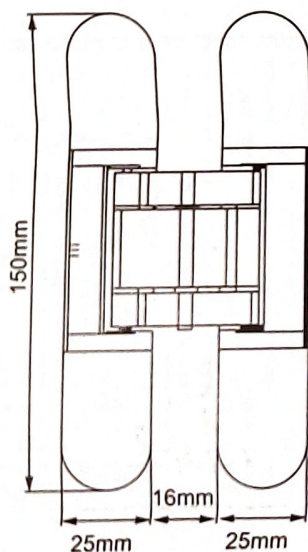
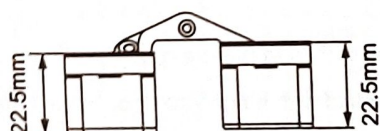
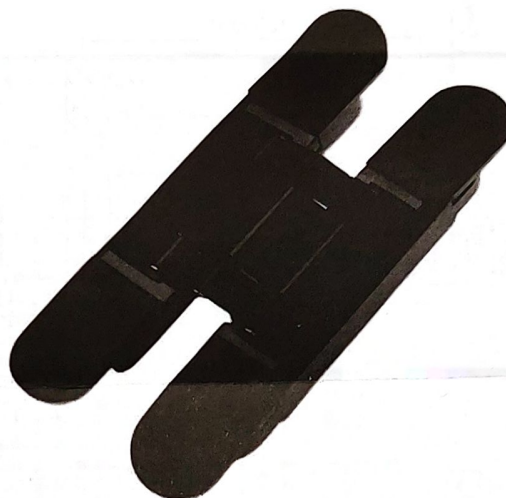
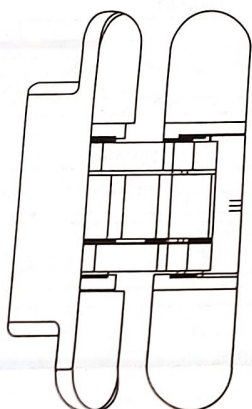








## Installation instructions

**i**

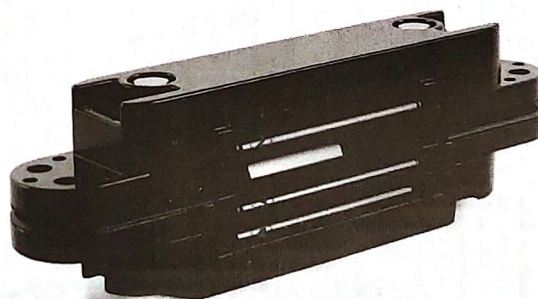
### 3D Adjustable Concealed Hinge 150X25mm



### Four axis thickened support arm

Four axis support      Even forcen      3D adjustment      Opening and closing mute



• Max door weight :	40kg (bearing weight of 2 hinges )
• Max opening angle :	$\leq 180^\circ$
• Max door width :	$\leq 850\text{mm}$
• Max door height :	$\leq 2286\text{mm}$
• Min door thickness :	35~40mm
• Adjustment function :	3D adjustable Up and down $\pm 3.0\text{mm}$ , front&rear $\pm 1.0\text{mm}$ , left&right $\pm 2.0\text{mm}$



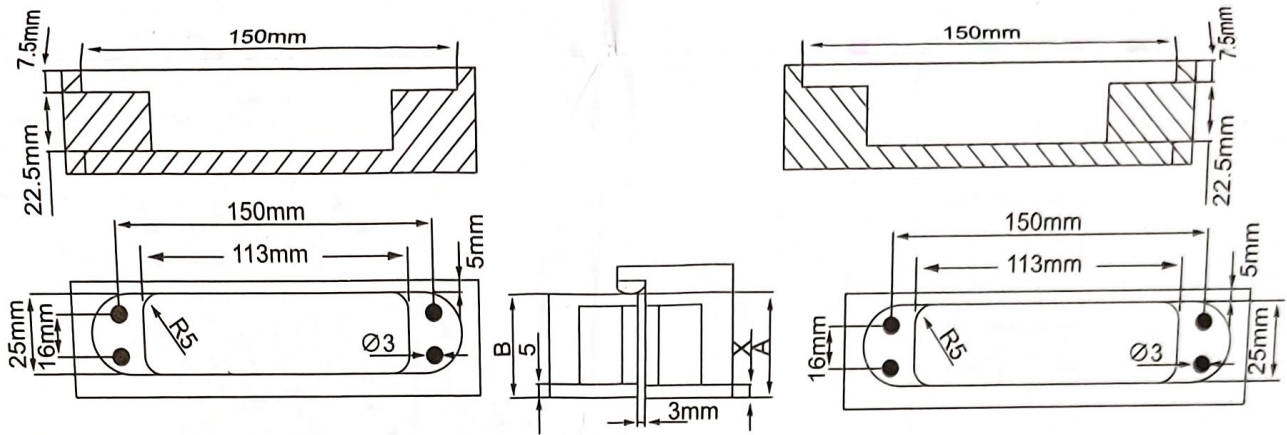
The packaging box contains: 2 hinges, 8 decorative arm covers, 16 psc  $\varnothing 5 \times 40\text{mm}$  wood screws, 1 pc M2.5 hexagonal spoon, 1 pc M3 hexagonal spoon, 1 pc M4 hexagonal spoon, and 1 installation manual



## Installation instructions

1

Make a slot on door leaf and door frame as the picture shown.



Hole dimension of door leaf & door frame

A= The depth between seal and door frame

B= The thickness of door leaf

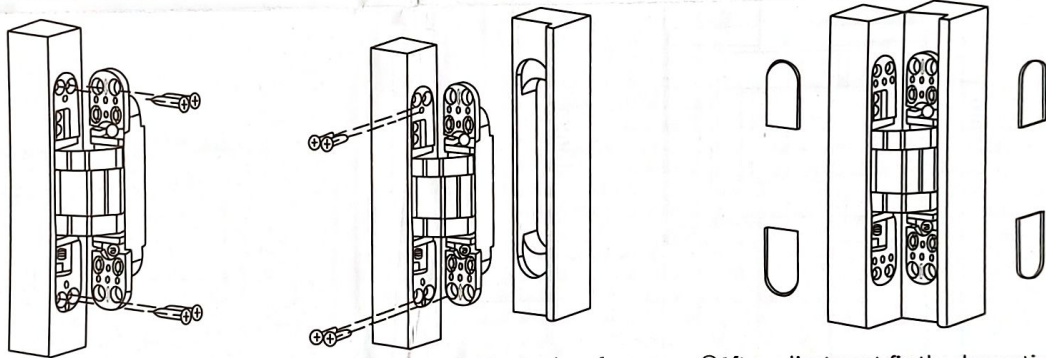
Step 1: Insert one hinge body side into the slot of door leaf as shown in picture ①.

Step 2: As the picture ②, use cross screwdriver to install the door leaf with hinge into door frame hole with screws.

Step 3: Overall check to ensure that all parts are installed tightly after installment and adjustment.

Step 4: To operate the open-close function for times, and make sure the function is in good condition.

2



① Insert the door body in the door leaf

② Install another side in the door frame

③ After adjustment, fix the decorative cover

Adjustment : Up&Down:  $\pm 3.0\text{mm}$  , Front & Rear :  $\pm 1.0\text{mm}$  , Left&Right:  $\pm 2.0\text{mm}$

Door Leaf Side

Door Frame Side

Front & Rear :  $\pm 1\text{mm}$

Thickened bearing

Left/Right:  $\pm 2\text{mm}$

Up/Down:  $\pm 3\text{mm}$

3

